

PERSONAL NAVIGATOR

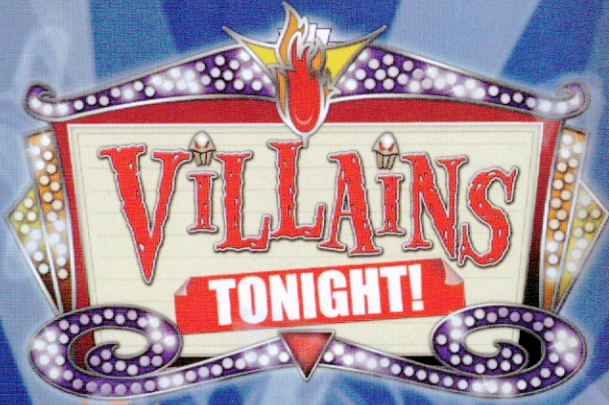
Sunrise: 6:55 a.m. Sunset: 5:49 p.m.
 Evening Attire: Pirate or Cruise Casual
 All Ashore: 9:30 a.m.
 All Aboard: 5:45 p.m.

Saturday: Mostly Sunny High: 71°F/22°C
 Sunday: Mostly Sunny High: 71°F/22°C

SATURDAY, JANUARY 25, 2014

NASSAU, BAHAMAS

DISNEY CRUISE LINE PRESENTS



WALT DISNEY THEATRE

Deck 4, Forward,
6:00 p.m. & 8:15 p.m.

As a courtesy to all Guests, we kindly advise that the saving of seats is **not** permitted in the Walt Disney Theatre.



Assistance available at the entrance to the Walt Disney Theatre 30 minutes prior to show time.

Nassau Port Information

While you will find many great experiences in Nassau, there have been reports of increased crime, including assaults and robberies involving tourists in the area. As in any large city, you'll want to take some basic precautions to make the most of your time ashore.

Be aware of your surroundings at all times, just as you would in your normal daily activities.

Avoid shortcuts, narrow alleys or poorly lit streets. We recommend that Guests only visit the downtown shopping areas and other tourist locations.

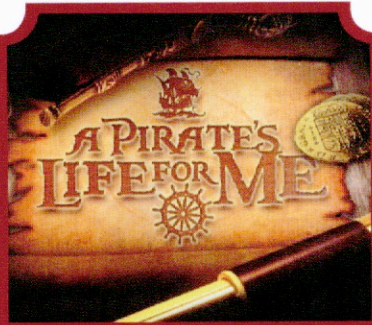
Leave valuables in your room safe and avoid carrying large amounts of cash. Exercise caution when using ATMs. Cameras and handbags should be carried out of sight and secured to you with a strap.

Leave passports, air transportation tickets and other travel documents in your room safe. When going ashore, each adult is required to carry a Driver's license, copy of passport or other government-issued photo ID.

If travelling by taxi, use only licensed taxi operators.

In general, use the same level of precaution you would use in any tourist destination.

Most crimes are easier to commit in dark, unlit areas. You should stay out of these types of areas and consider returning to the ship before nightfall. If you stay out at night, please be extra vigilant about your personal safety.



Aargh you ready to be a pirate? Come spin the "Wheel of Destiny" and capture the Pearl.

D Lounge,
Deck 4, Midship,
7:30 p.m.

Don't Miss:

Chip-It Golf (12+)

Lobby Atrium, Deck 3, Midship - 1:00 p.m.

It's par for the course for our Guests 12 and older to compete on our special "greens" in this fun tournament.

70's Music Trivia

O'Gills Pub, Deck 3, Forward - 8:30 p.m.

Let's step back in time and visit Studio 54 as we test your 70's music knowledge.

Disney Animation

Promenade Lounge, Deck 3, Aft - 4:30 p.m.

Your Cruise Staff teach you how to draw Mickey Mouse.

Krazy Karaoke followed by Club DJ Immortal (18+)

Fathoms, Deck 3, Forward - 11:00 p.m.

Take to the stage, grab a microphone and sing your favorite tunes with your Club Host and DJ. After, join our Club DJ Immortal as they rock the nightclub.

Disney CRUISE LINE. PORT ADVENTURES

Please check your tickets for meeting times and locations. Visit the Port Adventure's Desk, Deck 3, Midship for any questions.

DINNER MENU

Animator's Palate: Show Dinner
 Carioca's: South American Dinner
 Lumiére's: French Dinner

DRINK OF THE DAY

Sunken Treasure (Alcoholic)
 Parrot Song (Non Alcoholic)

IMPORTANT NUMBERS

Fire/Security: 7-3001
 Medical Emergency: 7-3000
 Health Center: 7-1923

FUN FOR ALL AGES HIGHLIGHTS



CHIP-IT GOLF (12+)

Lobby Atrium, Deck 3, Midship - 1:00 p.m.

It's par for the course for our Guests 12 and older to compete on our special "greens" in this fun tournament.

PICTIONARY CHALLENGE

Promenade Lounge, Deck 3, Aft - 1:45 p.m.

Come have some fun with this classic game

PIRATE TRIVIA QUEST

Promenade Lounge, Deck 3, Aft - 3:15 p.m.

Test the depths of your pirate knowledge with your Cruise Staff at this swashbuckling trivia event.

PIRATE PALOOZA

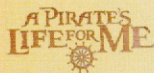
Promenade Lounge, Deck 3, Aft - 4:00 p.m.

Yo ho, matey's! Jump aboard, junior pirates, and get ready to set sail for fun and games at our Pirate Palooza!

A PIRATE'S LIFE FOR ME

D Lounge, Deck 4, Midship - 7:30 p.m.

Calling all Pirates, we be! If ye have an adventurous spirit or pirate savvy, come spin the "Wheel of Destiny" for a treasure trove of fun be ripe for the takin' in this action packed pirate game show.



ADULT ACTIVITY HIGHLIGHTS



VISTA SPA FITNESS CLASSES & SEMINARS

Sunrise Stretch - Senses Spa Fitness Center - 7:30 a.m.

Body Sculpt Boot Camp - Senses Spa Fitness Center - 8:00 a.m.

Detox for Health & Weight Loss - Senses Spa Fitness Center - 9:15 a.m.

Group Cycling - Senses Spa Fitness Center - 3:00 p.m.

Introduction to Acupuncture - Senses Spa & Salon - 3:00 p.m.

TASTING CLASSES

Wine Tasting (21+) - Palo - 12:30 p.m.

Martini Tasting (21+) - Keys - 2:30 p.m.

Please make reservations for tastings at Guest Services for a nominal fee.

Tasting Seminars are only for Guests 21 and Older.

CLUB
18*21

CLUB 18*21 - DIVE INTO DJ'ING

Fathoms, Deck 3, Forward - 5:30 p.m.

Join our Club DJ as he teaches you all the tricks to becoming a great DJ.

CLUB 18*21 - MIXER

Quiet Cove Pool, Deck 9, Forward - 9:30 p.m.

Come to join fellow cruisers your own age at our exclusive Club 18*21 event.

ART OF THE THEME SHOW TOUR

Meet at Palo, Deck 10, Aft - 4:30 p.m.

Join us on a guided ship tour and discover the key ingredients that make the Disney Magic.

KRAZY KARAOKE FOLLOWED BY CLUB DJ IMMORTAL

Fathoms, Deck 3, Forward - 11:00 p.m.

Take to the stage, grab a microphone and sing your favorite tunes with your Club Host Miguel and DJ. After, join our Club DJ Immortal as they rock the nightclub.

\$5,000 MEGA JACKPOT BINGO

Fathoms, Deck 3, Forward

Card Sales - 4:15 p.m.

Game Starts - 4:30 p.m.

Don't miss your chance to take home big money! 4 CASH prize games and great raffle prizes to be won! Complete the fourth game in 46 numbers or less and win the \$5,000 Mega Jackpot!

PIRATE DOUBLE UP BINGO

Fathoms, Deck 3, Forward

Card Sales - 7:15 p.m.

Game Starts - 7:30 p.m.

Arrrrgh! Don't miss our 4 cash prize games and your chance to win some great Disney Cruise Line raffle prizes! Plus your chance to win the Jackpot money early! All electronic chances are doubled tonight!

YOUTH ACTIVITIES HIGHLIGHTS

DINE & PLAY

A convenience for families dining at 8:15 p.m., our Youth Activities Counselors will be available at 9:15 p.m. at the entrance of Lumière's, Carioca's and Animator's Palate dining rooms to bring registered children to join the fun in Disney's Oceaneer Club and Disney's Oceaneer Lab.



Deck 5, Midship (7-1440)
(3-12 years old) 9:00 a.m. - 10:30 p.m.

ALOHA LUAU

11:45 a.m.

It's party time, Hawaiian style! Come join us for a Luau experience and learn how to dance like Lilo & Stitch.

TOY STORY BOOT CAMP

3:15 p.m.

Join Corporal Green in our own version of boot camp as we learn how to have fun - The Toy Story way!



Deck 5, Midship (7-1445)
(3-12 years old) 9:00 a.m. - 12:00 mid

ANIMATION ANTICS

9:15 a.m.

Learn simple animation techniques and then put your new skills to use by drawing some of your favorite Disney Characters.

SUPER SLOPPY SCIENCE

11:00 a.m.

Join Professor Make-O-Mess in some of the most extreme experiments you will ever see in the world of Super Sloppy Science!



Deck 2, Midship (7-5816)
(11-14 years old) 10:00 a.m. - 1:00 a.m.

SCAVENGER HUNT

1:30 p.m. & 9:00 p.m.

A little friendly competition exploring the ship; see if you can solve the clues and finish first

GENDER WARS

4:30 p.m.

Join us as we find out who really are the king or queen of the castle.



Deck 11, Midship (7-18517)
(14-17 years old) 12:00 p.m. - 2:00 a.m.

ANIMATION CELLS

12:00 p.m.

Learn what it takes to be a Disney Animator, then put your new skills to the test as you create your very own animation cell.

GAME CHALLENGE

5:00 p.m.

Come have some fun with these classic games

YOUTH ACTIVITIES OPEN HOUSE

Open House is an opportunity for all to come and participate in a variety of exciting activities and free time in Disney's Oceaneer Club, Disney's Oceaneer Lab, Edge, Vibe, and It's a Small World Nursery throughout the cruise. During these times secured programming will still be offered in the other venues for those looking to check their children into care.

Vibe: 7:30 p.m. - 8:30 p.m.
Edge: 10:00 a.m. - 12:00 p.m.

Disney's Oceaneer Lab: 3:00 p.m. - 5:00 p.m.
Disney's Oceaneer Club: 9:00 a.m. - 11:30 a.m.

PIRATES OF THE CARIBBEAN

Pirates IN The Caribbean Deck Party
9:45 p.m.
Deck 9 & 10
Mark the Spot

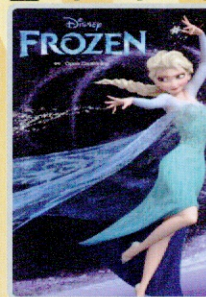
It's a Pirate Celebration, me hearties!
Yer Disney Friends are all set for a swashbucklin' good time! That's a Pirate's Dinner all mapped out for yer feasting' before 'ya hoist yourself to Deck 9 to enjoy a rowdy buccaneer bash we call Pirates IN the Caribbean Deck Party.
(Weather Permitting)

Viewing areas located Deck 9 Midship port side gazebo and next to Pinoch's Pizzeria port side.

BUENA VISTA THEATRE

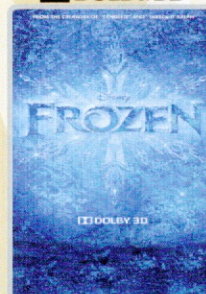
Today's Movies

OC - Open Captioning

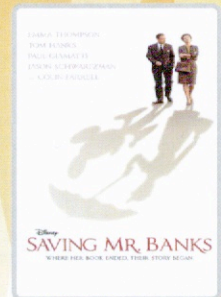


12:30 p.m.
Duration: 1 hr 48 mins
Rating: PG

DOLBY 3D



5:30 p.m. & 7:45 p.m.
Duration: 1 hr 48 mins
Rating: PG



3:00 p.m.
Duration: 2 hrs 5 mins
Rating: PG-13

DOLBY 3D



11:00 p.m.
Duration: 1 hr 51 mins
Rating: PG-13

Subject to change.

MORE TO ENJOY WHILE ONBOARD



PLAN YOUR NEXT GETAWAY NOW

Our 3 and 4 night Bahamian Cruises are a perfect way to get an instant tropical recharge! Departing from Miami or Port Canaveral, most Bahamian cruises include a stop at Disney's private island, Castaway Cay. Visit the Future Cruise Sales Desk today and ask about our special onboard booking offer.



DISNEY VACATION CLUB

Visit the Disney Vacation Club information desk and ask us about show times where you will learn how to turn every vacation into the vacation of a lifetime.



LAST MINUTE SHOPPING ADVICE

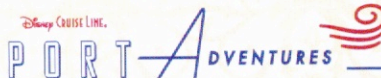
Nassau is one of the largest tax and duty free shopping locations! Don't miss the incredible shopping in Nassau today and take advantage of the savings! Meet Candese at Diamonds International #1A on your shopping map between 10:00 a.m. - 12:00 p.m. and enter to win a beautiful Diamond Heart Pendant! Make sure to pick up your shopping maps & coupons on the gangway.

WIRELESS INTERNET: KEEPING YOU CONNECTED AT SEA

\$0.75 per minute or save money by buying blocks of time. \$27.50 for 50 minutes, \$40.00 for 100 minutes and \$75.00 for 250 minutes. Wireless information sheets are available at Guest Services, Deck 3, Midship and the Internet Cafe, Deck 3, Aft. Due to the technology involved and satellite connectivity, the onboard internet service will be noticeably slower than you may be accustomed to and might at times be interrupted or unavailable.

ONBOARD AIRLINE CHECK IN

Stop by the Guest Services Desk, Deck 3, Midship to find out about enrolling in our Onboard Airline Check In Service.



We have arrived at the Bahamian paradise of Nassau! There are many exciting adventures to choose from in Nassau and Disney's private island, Castaway Cay! Why not swim with Dolphins or visit Atlantis Resort and their very own water park? Why not explore the beautiful undersea life with one of our many splashtacular adventures!

Stop by the Port Adventures Desk, Deck 3, Midship, and our team will be happy to assist!

SHOPPING

LIGHT UP THE NIGHT

Glow merchandise is only available on Pirate Night! Don't miss your opportunity to light up the night! Please see a Merchandise Cast Member, Deck 9, on Pirate Night to complete your pirate attire!

H2O BATH COLLECTION

Treat yourself to the ultimate indulgence with H2O bath products. H2O offers shampoo, conditioner, lip balm, hydrating body lotion and after sun care. Available in Whitecaps, Deck 4, Midship.

RED CARPET SOPHIA FIORI DIAMOND UNVEILING

Drop in at Whitecaps today to meet the diamond specialist with Sophia Fiori. Whether you are a Hollywood celebrity or a full time Mom, every woman experiences a Red Carpet Moment when putting on Sophia Fiori Jewelry so treat yourself, you deserve it! Deck 4, Forward.

ERNST BENZ WATCHES

Manufactured in Switzerland and made in the time honored tradition of aviation timekeepers and the fine art of watch making, these large formats, self-winding instruments are renowned for their accuracy, durability and legibility. Stop by Whitecaps to see our full collection today! Deck 4, Forward.

Due to port regulations, when the ship is docked, the stores will remain closed.



Deck 9, Forward - Phone : 7-1465

PAMPER PACKAGE

50 Minute Full Body Massage and 25 Minute Booster Facial,
Scalp Massage and Foot Massage
75 Minutes of for \$149

SOPHIA FIORI DIAMOND TRUNK SHOW

Dazzling Diamonds,
Tantalizing Tanzanite and
many other Jewels.

WHITECAPS

Deck 4, Forward



PORTFOLIO DEAL

Purchase any photo package and get \$5.00 off an 8 x 10 portfolio frame.
Every portfolio comes with two free 8 x 10 stock photos!

**Please note that photos are available for viewing on our interactive photo kiosks approximately five hours after being taken and are only available for purchase during this cruise.*

IMPORTANT INFORMATION

Security Notice

All Guests (including Children) who wish to disembark or embark the ship are required to present their Key to the World card at the gangway. A photo ID is also required for those Guests who are 18 years of age or older. Guests under the age of 18 are required to have a parent, guardian or other responsible adult sign an authorization form at the Guest Service Desk if they wish to go ashore unaccompanied or with any adult from another stateroom.

Sunscreen/Insect Repellent Advisory
Please remember to use plenty of sunscreen and mosquito repellent when venturing ashore.

Cold and Flu Reminder

Please wash hands frequently and thoroughly, particularly before meals. Contact the Health Center by dialing 7-1923, should anyone in your party become ill.

Inclement Weather

For the safety of all Guests, outdoor events may be changed due to unforeseen weather conditions.

Corridor Quiet Hours

As a courtesy to all our Guests, please recognize quiet hallway hours from 10:00 p.m. til 8:00 a.m.

Environmental Message

With Disney's commitment to the Environment please refrain from throwing anything over the Ship's side. Thank you.

No Reserved Seats Policy

As a courtesy to all Guests we kindly advise that the saving of seats is not permitted in the Walt Disney Theatre, and the saving of the sun loungers is not permitted on Deck 9 and 10. Items left unattended will be returned to lost and found at Guest Services, Deck 3, Midship.

Smoking

For the comfort of our guests, the following areas are designated as smoking areas:
• Deck 10 forward, Starboard side
• Deck 9, forward, Starboard side at Quiet Cove
• Deck 4, aft, port side from 6:00 p.m. to 6:00 a.m. only (all of Deck 4 is non-smoking from 6:00 a.m. to 6:00 p.m.)
Smoking is prohibited inside all guest staterooms and on stateroom verandahs. Guests found smoking in their staterooms or on their verandahs will be charged a \$250 stateroom recovery fee

Sunscreen Advisory

Don't forget to apply sunscreen and insect repellent when going ashore.

Walt Disney Theatre

Theatrical performances may use artificial fog, strobe lights, pyrotechnics and other special effects. For the safety of our performers and the comfort of those around you, the use of any photography or video recording device or any electronic equipment is prohibited.

Verandah Safety

Please do not leave any combustible materials on your balcony when not present in your stateroom for safety reasons.

Morning	8:30	8:45	9:00	9:15	9:30	9:45	10:00	10:15	10:30	10:45	11:00	11:15	11:30	11:45	12:00	12:15	12:30	12:45	1:00	1:15	1:30
FUNNEL VISION	The Emperor's New Groove (G) Funnel Vision						Cars (G) Funnel Vision						Ratatouille (G) Funnel Vision								
BUENA VISTA THEATRE	Frozen (PG) Duration: 1 Hour 48 Minutes																				
CHARACTER	Princess Gathering Lobby Atrium				Cpt. Hook Dk 4, Mid				Goofy Gazebo, Dk 9				Mickey Gazebo, Dk 9								
	Jake Dk 4, Mid				Jake Dk 4, Mid								Minnie Gazebo, Dk 9								
FUN FOR ALL AGES	Port Adventures - Please check your tickets for meeting times and locations						Family Crafts: Buttons O'Gills Pub			Ping Pong Tournament Wide World of Sports Deck			Cruise Staff Lunch Lumiere's			 Lobby Atrium (12-)					
	Board Games Available in O'Gills Pub																				
ADULTS	Friends of Bill W. Keys																				
	Books and Magazines available in Cove Cafe																				
	Wine Tasting (21+) Palo (Nom. Fee Applies)																				
VIBE 14-17 YEARS OLD													Animation Cells			Xbox Kinect Tournament					
EDGE 11-14 YEARS OLD	Youth Activities Open House												Craft Corner			Scavenger Hunt					
OCEANEER LAB 3-12 YEARS OLD	Animation Antics						Super Sloppy Science						Lunch								
OCEANEER CLUB 3-12 YEARS OLD	Youth Activities Open House						Aloha Luau						Lunch								
	Mickey's Puzzle Playtime						Become Iron Man!														

Symbol for activities that will be repeated during the cruise

Symbol for activities that will be repeated during the cruise

FOLD

Afternoon	1:45	2:00	2:15	2:30	2:45	3:00	3:15	3:30	3:45	4:00	4:15	4:30	4:45	5:00	5:15	5:30	5:45	6:00	6:15	6:30	6:45			
FUNNEL VISION	Peter Pan (G) Funnel Vision						Treasure Planet (PG) Funnel Vision						Pirates of the Caribbean I (PG-13) Funnel Vision											
BUENA VISTA THEATRE	Saving Mr. Banks (PG-13) Duration: 2 Hours 5 Minutes																							
CHARACTER	Daisy Gazebo, Dk 9				Goofy Gazebo, Dk 9				Mickey Lobby Atrium (P)				Minnie Lobby Atrium (P)				Jack Sparrow Preludes				Minnie Lobby Atrium (P)			
	Princess Gathering Lobby Atrium				Donald Gazebo, Dk 9				Stitch Dk 4, Mid				Cpt. Hook Dk 4, Mid				Mickey Lobby Atrium (P)							
FUN FOR ALL AGES	Pictionary Challenge Promenade Lounge		Pirate Crafts Promenade Lounge		Pirate Trivia Quest Promenade Lounge		Bingo Pre Sales		\$5,000 Mega Jackpot Fathoms		Live Music with Infusion Promenade Lounge		 Walt Disney Theatre											
							Pirate Palooza Promenade Lounge		Animation - Mickey Promenade Lounge															
ADULTS	Martini Tasting (21+) Keys (Nom. Fee Applies)				Introduction to Acupuncture Senses Spa & Salon				Pool Games Quiet Cove Pool				Disney Vacation Club Group Preview D Lounge				Club 18*21 - Dive into DJ'ing Fathoms				50's and 60's Music Trivia O'Gills Pub			
	David Kenny Live Quiet Cove Pool				David Kenny Live Quiet Cove Pool				Art of The Theme Show Tour Meet at Palo															
VIBE 14-17 YEARS OLD	Xbox Kinect Tournament				Trivia Challenge				Scavenger Hunt				Game Challenge				Smoothie Hour							
EDGE 11-14 YEARS OLD	Scavenger Hunt				Spoons Challenge				Gender Wars				Youth Activities Open House											
OCEANEER LAB 3-12 YEARS OLD	Hats Off to Peter Pan				Youth Activities Open House				Anyone Can Cook				Dinner											
OCEANEER CLUB 3-12 YEARS OLD	Become Iron Man!				Toy Story Boot Camp				Picture This				Dinner											

FOLD

Fold along the dotted lines and take me with you so you don't miss any of the fun!

FOLD

Evening	7:00	7:15	7:30	7:45	8:00	8:15	8:30	8:45	9:00	9:15	9:30	9:45	10:00	10:15	10:30	10:45	11:00	11:15	11:30	11:45	12:00	
FUNNEL VISION													Pirates IN The Caribbean Deck Party Funnel Vision									
BUENA VISTA THEATRE	Frozen (PG) Duration: 1 Hour 48 Minutes																					
CHARACTER	Peter Pan Dk 4, Mid		Jack Sparrow Preludes		Minnie Lobby Atrium (P)		Mickey Lobby Atrium (P)															
	Mickey Lobby Atrium (P)		Cpt. Hook Dk 4, Mid		Peter Pan Dk 4, Mid																	
FUN FOR ALL AGES	Bingo Pre Sales		 Fathoms		 Walt Disney Theatre				Club DJ Immortal Deck Stage		 Deck Stage		Club DJ Immortal Deck Stage									
			A Pirate's Life For Me D Lounge						Live Music with Infusion Promenade Lounge		Live Music with Infusion Promenade Lounge											
ADULTS	Ultimate Disney Trivia O'Gills Pub				70's Music Trivia O'Gills Pub				Club 18*21 - Mixer Quiet Cove Pool		Video Dance Party Fathoms				Krazy Karaoke followed by Club DJ Immortal Fathoms							
	Live Piano with Clara Oman Keys								David Kenny LIVE Quiet Cove Pool		David Kenny LIVE Quiet Cove Pool											
VIBE 14-17 YEARS OLD	Sports Deck Fun		Youth Activities Open House				AquaDunk Fun		Pump It Up		Fireworks				Pizza Party		A Pirate's Life For Me					
EDGE 11-14 YEARS OLD	Open House		Sports Deck Fun		AquaDunk Fun		Scavenger Hunt		Fireworks				Pizza Party		A Pirate's Life For Me							
OCEANEER LAB 3-12 YEARS OLD	Anyone Can Cook				A Pirate's Life For Me				Scavenger Hunt				GAGA Ball									
OCEANEER CLUB 3-12 YEARS OLD	So You Want to be a Pirate?				Youth Activities Open House				Become Iron Man!													

FOLD

IN THE SPOTLIGHT SERIES

SOLOVE IT! SERIES

JUMP UP! SERIES

CREATE & INSPIRE SERIES

OPEN HOUSE

CLUBHOUSE SERIES

STORYBOOK SERIES

BUENA VISTA THEATRE

OC - Open Captioning

DOLBY 3D DOLBY 3D



12:30 p.m.
Duration:
1 hr 48 mins
Rating: PG



3:00 p.m.
Duration:
2 hrs 5 mins
Rating: PG-13



5:30 p.m. & 7:45 p.m.
Duration:
1 hr 48 mins
Rating: PG



11:00 p.m.
Duration:
1 hr 51 mins
Rating: PG-13

Character Appearances

PRINCESS GATHERING
Lobby Atrium
9:00 a.m. & 2:30 p.m.

JAKE - THE NEVERLAND PIRATE
Deck 4, Midship
9:15 a.m. & 10:15 a.m.

CAPTAIN HOOK
Deck 4, Midship - 9:45 a.m.,
5:15 p.m. & 7:30 p.m.

GOOFY
Gazebo, Dk 9
12:30 p.m. & 2:45 p.m.

MINNIE MOUSE
Gazebo, Dk 9 - 1:00 p.m.

MICKY MOUSE
Gazebo, Dk 9 - 1:30 p.m.

DAISY DUCK
Gazebo, Dk 9 - 2:15 p.m.

DONALD DUCK
Gazebo, Dk 9 - 3:15 p.m.

PIRATE MICKEY MOUSE
Lobby Atrium (P) - 4:30 p.m.,
5:30 p.m., 7:15 p.m. & 8:15 p.m.

PIRATE STITCH
Deck 4, Midship - 4:45 p.m.

PIRATE MINNIE MOUSE
Lobby Atrium (P) - 5:00 p.m.,
6:00 p.m. & 7:45 p.m.

CAPTAIN JACK SPARROW
Preludes - 5:30 p.m. & 7:30 p.m.

PETER PAN
Deck 4, Midship
7:00 p.m. & 8:00 p.m.

PIRATES IN THE CARIBBEAN DECK PARTY
Deck Stage - 9:45 p.m.



Don't forget your Camera to capture those Magical Moments!
Check here each day for Character appearances.
For detailed Character appearance information, please see the Character Information Board in the Lobby Atrium.
Meet-and-Greets will be advertised for the length of time the line will be open. To avoid disappointment, please meet at start time of appearances.

CLUBHOUSE SERIES
focuses on movement and features content which appeals to younger children.

STORYBOOK SERIES
is designed with a strong connection to the Disney classic stories.

JUMP UP! SERIES
includes large group games & movement-oriented activities.

CREATE & INVENT SERIES
will have a tactile focus allowing children to create and admire their work.

IN THE SPOTLIGHT SERIES
focuses on children's stage presence with lots of activities and enthusiasm.

SOLVE IT! SERIES
are less active, but will challenge children with problem/solutions-based activities.

YOUTH ACTIVITIES OPEN HOUSE

Activities for families, adults and children of all ages to enjoy together.

SHIP DIRECTORY

YOUTH ACTIVITIES

DISNEY'S OCEANEER CLUB	DECK 5, MID	9:00 AM - 10:30 PM
DISNEY'S OCEANEER LAB	DECK 5, MID	9:00 AM - 12:00 MID
EDGE	DECK 2, MID	10:00 AM - 1:00 AM
IT'S A SMALL WORLD NURSERY	DECK 5, AFT	8:00 AM - 11:00 PM
VIBE	DECK 11, MID	12:00 PM - 2:00 AM

POOLS

*Children under 12 years of age must have adult supervision in all pools.

AQUADUNK	DECK 10, MID	11:00 AM - 8:30 PM
AQUALAB	DECK 9, AFT	9:00 AM - 9:00 PM
GOOFY'S POOL	DECK 9, MID	9:00 AM - 6:00 PM
NEPHEW'S SPLASH ZONE	DECK 9, AFT	9:00 AM - 6:00 PM
QUIET COVE POOL	DECK 9, FWD	6:00 AM - 12:00 MID
TWIST 'N' SPOUT	DECK 9, AFT	10:00 AM - 9:00 PM

RECREATION

PORT ADVENTURES DESK	DECK 3, MID	9:00 AM - 11:00 AM 7:00 PM - 8:30 PM
SENSES FITNESS CENTER	DECK 9, FWD	6:30 AM - 10:00 PM
WIDE WORLD OF SPORTS DECK	DECK 10, FWD	24 HOURS

GENERAL INFORMATION

BUENA VISTA THEATRE	DECK 5, AFT	SHOWTIMES
DISNEY VACATION CLUB DESK	DECK 4, MID	9:00 AM - 11:00 AM 5:30 PM - 10:00 PM
FUTURE CRUISE SALES DESK	DECK 4, MID	8:30 AM - 9:30 AM 4:00 PM - 6:00 PM 7:30 PM - 8:30 PM
FUNNEL VISION	DECK 9, MID	SHOWTIMES
GUEST SERVICES	DECK 3, MID	24 HOURS
HAIR BRAIDING	DECK 9, MID	
MEDICAL HEALTH CENTER	DECK 1, FWD	9:30 AM - 11:00 AM 4:30 PM - 7:00 PM
PORT & SHOPPING DESK	DECK 3, MID	7:30 PM - 8:30 PM
PRELUDES	DECK 4, FWD	5:30 PM - 8:30 PM
QUARTER MASTERS (ARCADE)	DECK 9, MID	24 HOURS
SENSES SPA AND SALON	DECK 9, FWD	8:00 AM - 10:00 PM
SHUTTERS PHOTO GALLERY	DECK 4, AFT	5:00 PM - 10:30 PM
WALT DISNEY THEATRE	DECK 4, FWD	SHOWTIMES

SHOPPING

MICKEY'S MAINSAIL	DECK 4, FWD	6:30 PM - 11:00 PM
QUACKS	DECK 9, MID	
SEA TREASURES	DECK 3, FWD	6:30 PM - 11:00 PM
VISTA GALLERY	DECK 4, MID	6:30 PM - 10:00 PM
WHITECAPS	DECK 4, FWD	6:30 PM - 11:00 PM

IMPORTANT NUMBERS

Fire/Security:	7-3001
Medical EMERGENCY:	7-3000
Health Center:	7-1923

DINING MEN	Carioca's: South American Dinner	DRINK OF THE DAY	(Alcoholic)	WEATHER FORECASTS	Mostly Sunny
	Lumiére's: French Dinner		(Non - Alcoholic)		High: 71°F/22°C
	Dining Times: 5:45pm & 8:15pm				Sunday: Mostly Sunny High: 71°F/22°C

Evening Attire: Pirate or Cruise Casual

DINING & LOUNGES

BREAKFAST

CABANAS	DECK 9, AFT	7:30 AM - 11:30 AM
DAISY'S DE-LITES	DECK 9, AFT	7:00 AM - 9:30 AM
LUMIERE'S (A-LA CARTE)	DECK 3, MID	8:00 AM - 9:30 AM

LUNCH

CABANAS	DECK 9, AFT	11:30 AM - 3:00 PM
DAISY'S DE-LITES	DECK 9, AFT	11:00 AM - 6:00 PM
LUMIERE'S	DECK 3, MID	12:00 PM - 1:30 PM
PETE'S BOILER BITES	DECK 9, AFT	11:00 AM - 6:00 PM
PINOCCHIO'S PIZZERIA	DECK 9, MID	11:00 AM - 6:00 PM

DINNER

ANIMATOR'S PALATE	DECK 4, AFT	5:45 PM & 8:15 PM
CABANAS TABLE SERVICE	DECK 9, AFT	6:30 PM - 8:30 PM
CARIOCA'S	DECK 3, AFT	5:45 PM & 8:15 PM
LUMIERE'S	DECK 3, MID	5:45 PM & 8:15 PM
PALO (FOR RESERVATIONS CALL 7-6843)	DECK 10, AFT	6:00 PM - 8:30 PM
PETE'S BOILER BITES	DECK 9, AFT	6:00 PM - 10:00 PM

LATE NIGHT SNACKS

CABANAS PIRATE BUFFET	DECK 9, AFT	10:45 PM - 11:15 PM
PINOCCHIO'S PIZZERIA	DECK 9, MID	9:30 PM - 12:00 MID

ADDED FEATURES

EYE SCREAM	DECK 9, AFT	11:00 AM - 11:00 PM
FROZONE TREATS	DECK 9, AFT	11:30 AM - 8:00 PM
BEVERAGE STATION	DECK 9, AFT	24 HOURS
ROOM SERVICE	DIAL 7-4330	24 HOURS

ENTERTAINMENT - LOUNGES - BARS

Adults must be 21 and older to consume alcoholic beverages.

AFTER HOURS	DECK 3, FWD	(AFTER 9:00 PM. ADULTS ONLY)
COVE CAFE (18+)	DECK 9, MID	7:00 AM - 12:00 MID
FATHOMS (18+)	DECK 3, FWD	7:00 PM - 2:00 AM
INTERNET CAFE	DECK 3, AFT	24 HOURS
KEYS (18+)	DECK 3, FWD	5:30 PM - 12:00 MID
O'GILLS PUB (18+)	DECK 3, FWD	3:00 PM - 12:00 MID
PRELUDES	DECK 4, FWD	5:30 PM - 8:30 PM
PROMENADE LOUNGE	DECK 3, AFT	9:00 AM - 12:00 MID
PINOCCHIO'S PIZZERIA	DECK 9, MID	9:30 AM - 12:00 MID
SIGNALS (18+)	DECK 9, FWD	11:00 AM - 12:00 MID
D LOUNGE	DECK 4, MID	SHOWTIMES

Public Health Advisory: Consuming raw or undercooked meats, poultry, seafood, shellfish, or eggs may increase your risk for foodborne illness, especially if you have certain medical condition.

All Ashore: Approx. 9:30 a.m.
All Aboard: 5:45 p.m.

SHIP'S AGENT IN NASSAU
R.H. CURRY & CO., LTD.
Ph: 242 323 8425